

Oxford Back-to-Wall Freestanding Bath



Product Code: **OX1700W**

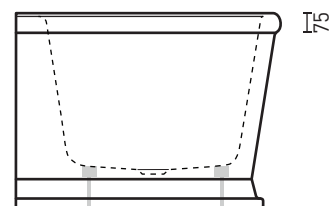
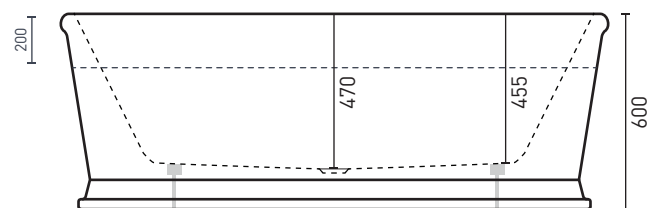
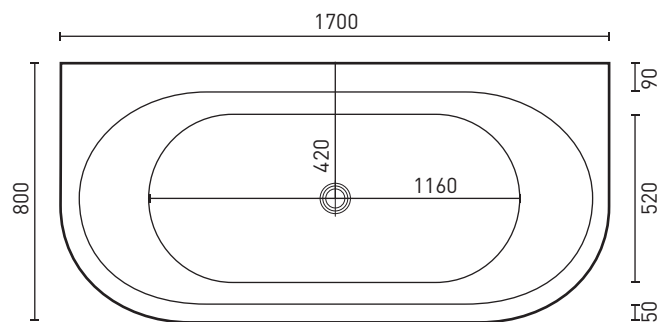
The Oxford's Hampton-inspired style has a chic heritage aesthetic that sits flush up against a wall with no tile bead integration required.

- AS/NZ Standard 2023/1995
- Adjustable self-supporting feet
- Lumbar support
- Full steel support frame
- Suitable for dual bathing



PRODUCT SPECIFICATIONS

Colour:	High gloss white
Material:	Premium sanitary grade acrylic
Length:	1700mm
Width:	800mm
Height:	600mm
Capacity:	174L [200mm below the bath rim]
Bath Type:	Back-to-wall freestanding
Waste Position:	Centre
Net Weight:	50kg
Warranty:	10 years* (refer to decina.com.au)



OPTIONAL ACCESSORIES

Pop-Up Plug & Waste **WA001**

Overflow [must be requested upon ordering this bath]

DECINA
DISCOVER INDULGENCE

[DECINA.COM.AU](https://www.decina.com.au) 1300 DECINA

*Warranty T&Cs apply, visit [decina.com.au](https://www.decina.com.au) Decina reserves the right to change specifications without notice. Due to manufacturing tolerances dimensions may vary +/- 5mm. We recommend installation does not start until after delivery. Please confirm all particulars prior to purchase, call 1300 DECINA or visit [decina.com.au](https://www.decina.com.au)