

# MB08

## FREE-STANDING BATH MIXER

meir®

MATTE BLACK  
MB08

CHROME  
MB08-C

AVAILABLE  
FINISHES

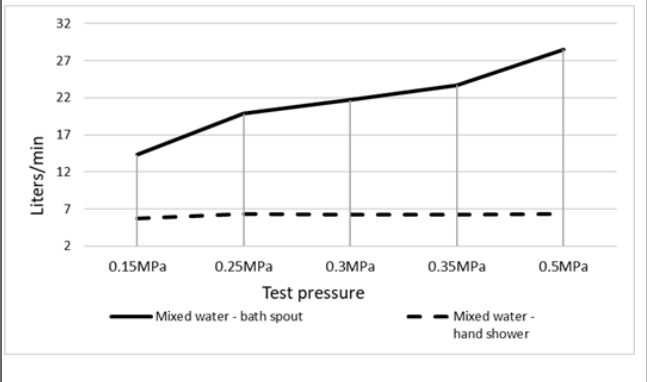
### FEATURES

- 10 Year warranty
- Flow rate 22 L p/m
- European components and cartridge
- Solid brass construction
- Box Weight 7.4 Kg

### CARE

- Do not install tapware using any form of acetone silicones.
- Do not apply physical items (such as tools) directly to product.
- Never use house-hold or commercial detergents, citrus based cleaners, or abrasive cleaners.
- Clean using a mild washing soap solution rinsed, and dry with a soft cloth.
- Check for any product defects before installation.
- Refer to the installation manual for correct installation.

### FLOW RATE GRAPH

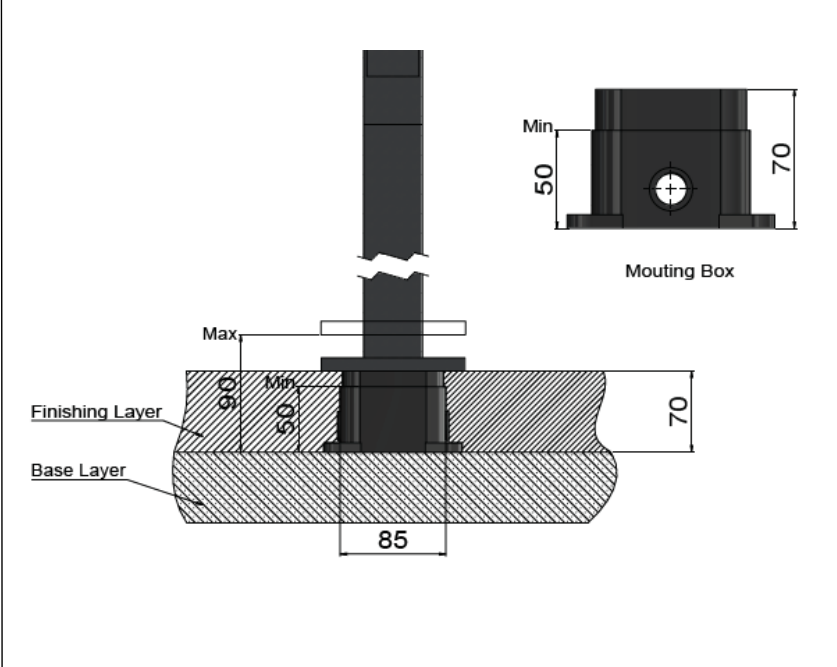


### CREDENTIALS

- Watermark AS/NZS3718WMKA25013



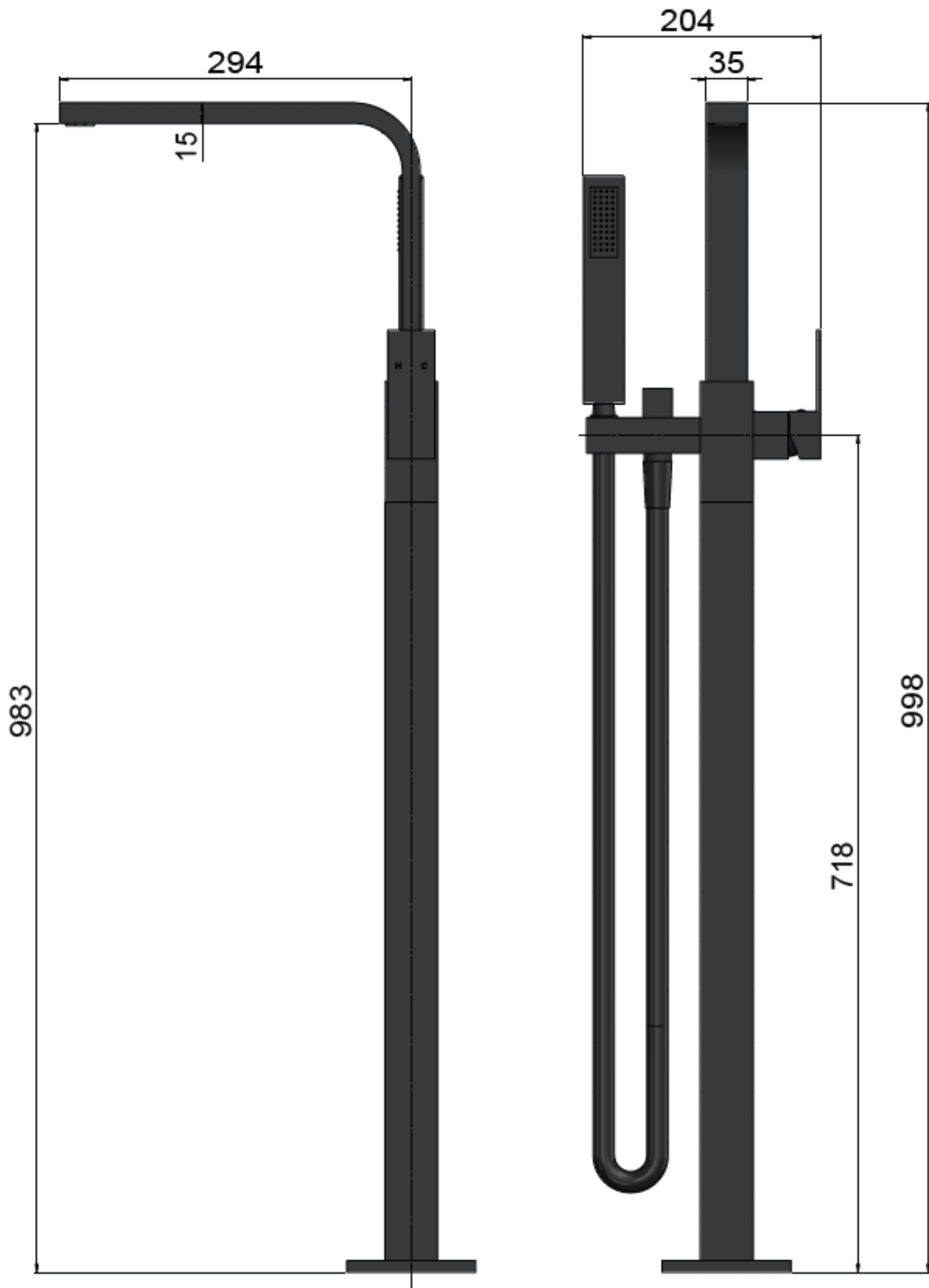
### TOLERANCE



# MB08

## FREE-STANDING BATH MIXER

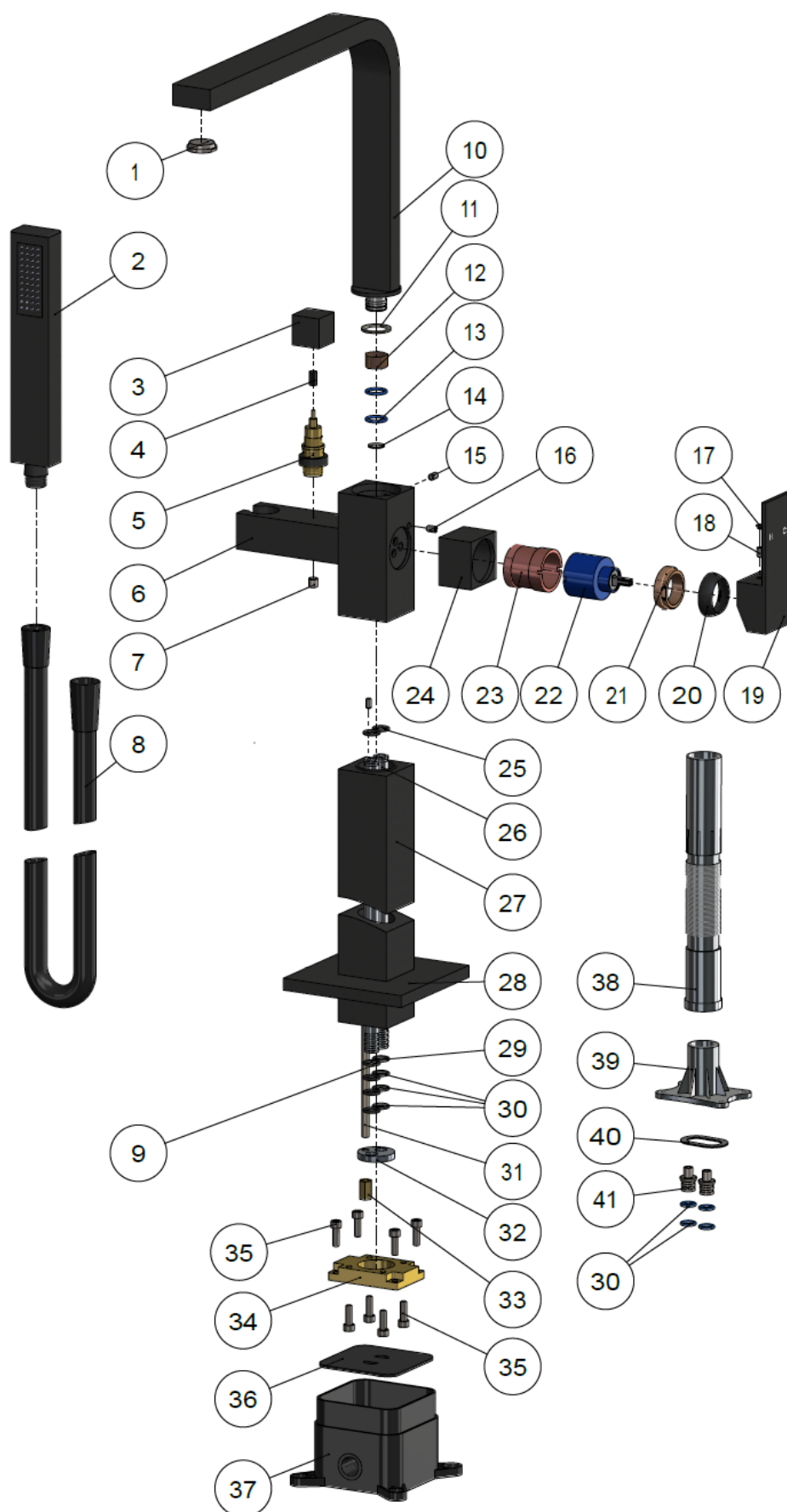
### SPECIFICATIONS



# MB08

## FREE-STANDING BATH MIXER

### EXPLODED VIEW



| No. | Part Name            |
|-----|----------------------|
| 1   | Aerator              |
| 2   | Square Handle Shower |
| 3   | Handle               |
| 4   | Decor Cover          |
| 5   | Divertor             |
| 6   | Body                 |
| 7   | Non-return Valve     |
| 8   | Shower Hose          |
| 9   | O-ring               |
| 10  | Spout                |
| 11  | Wear Resisting Ring  |
| 12  | Wearing Ring         |
| 13  | O-ring               |
| 14  | Rubber Ring          |
| 15  | Screw                |
| 16  | Screw                |
| 17  | Decor Knob           |
| 18  | Screw                |
| 19  | Handle               |
| 20  | Decor Cover          |
| 21  | Nut                  |
| 22  | D35 Cartridge        |
| 23  | Copper Sleeve        |
| 24  | Decor Cover          |
| 25  | O-ring               |
| 26  | Connecting Tube      |
| 27  | Stand Pipe           |
| 28  | Back Plate           |
| 29  | O-ring               |
| 30  | O-ring               |
| 31  | Connecting Screw Rod |
| 32  | Stator               |
| 33  | Nut                  |
| 34  | Fixed Plate          |
| 35  | Screw                |
| 36  | Dustproof Cover      |
| 37  | Plastic Box          |
| 38  | Water Pipe           |
| 39  | Water Test Pipe      |
| 40  | Rubber Ring          |
| 41  | Connectors           |